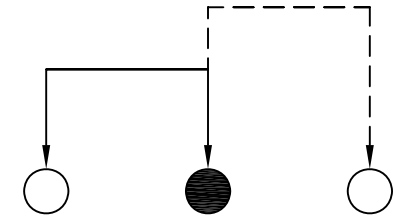
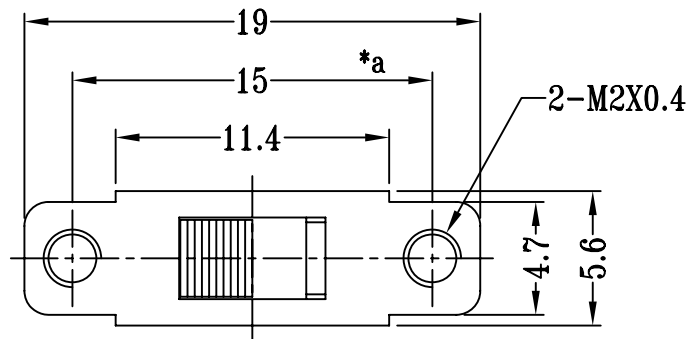
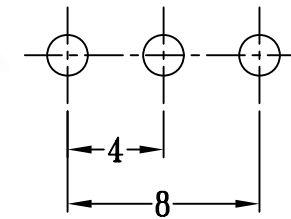
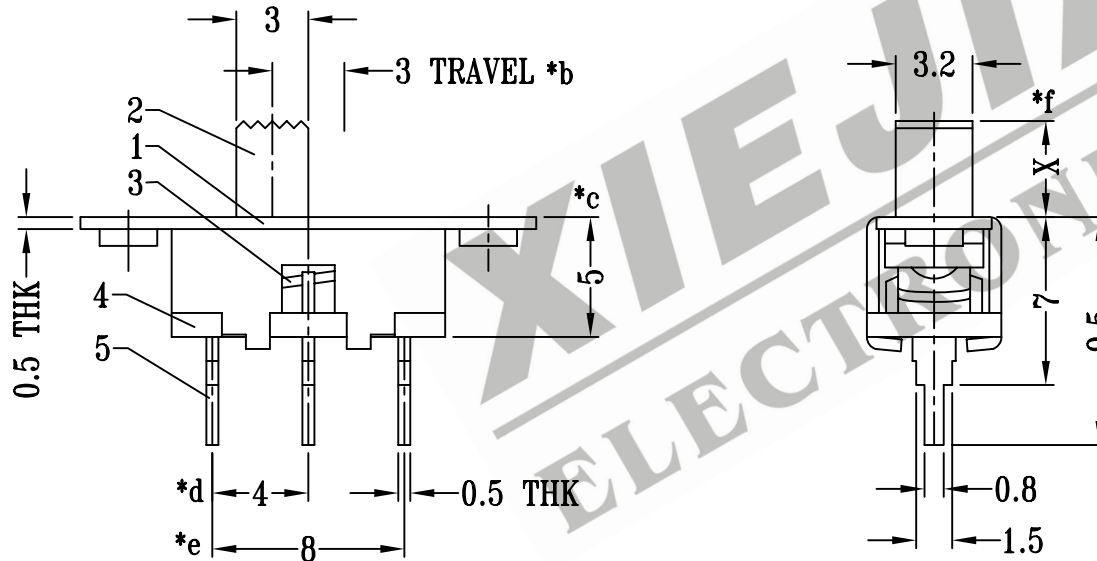


CAD FILE:



SCHEMATIC (NON-SHORTING)



P.C.B LAYOUT

注:带"*"表示关键尺寸(6个)

| NO. | PARTS | MATERIALS | Q'TY | FINISH | TOLERANCE UNLESS SPECIFIED | SHENZHEN XIEJIA ELECTRONICS CO.,LTD. | | | | |
|-----|--------------|----------------|------|--------------------------|---|--------------------------------------|------|---------------------------|--|-----------|
| 8 | | | | | | TITLE : VERTICAL SLIDE SWITCH | | | | |
| 7 | SPRING | STEEL WIRE | 1 | TEMPER | | | | | | UNIT : mm |
| 6 | STEEL BALL | STEEL | 1 | NATURAL | WITHIN: 1.5±0.1mm | ISSUE | DATE | DESCRIPTIONS OF REVISION | | |
| 5 | TERMINAL | BRASS STRIP | 3 | Ag PLATED OVER Ni PLATED | OVER : 1.5±0.2mm | | | APPD. | | |
| 4 | BASE | PHENOLIC RESIN | 1 | NATURAL | | SCALE: 3 : 1 | | DWN. ZHOUYU 2004-8-23 | | |
| 3 | CONTACT CLIP | BRASS STRIP | 1 | Ag PLATED | | | | CHK'D FANGYING 2004-8-23 | | |
| 2 | KNOB | POM | 1 | BLACK | | | | APPD. KANGXINAN 2004-8-23 | | |
| 1 | FRAME | STEEL STRIP | 1 | BLACK | | | | | | |
| | | | | | ALL MATERIALS MUST BE COMPLIANT TO ROHS | | | | | |